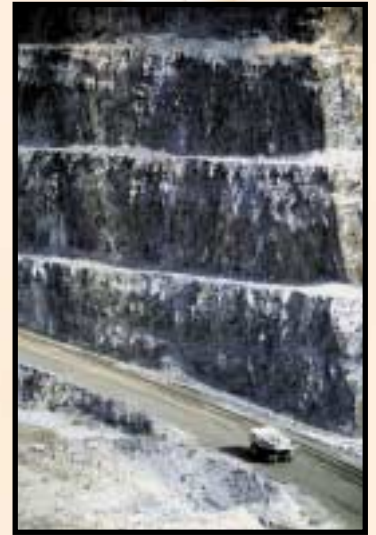


International  
Comprehensive  
Innovative  
Independent  
Experienced  
Flexible  
Practical

# **RISK MANAGEMENT** Services

Risk Management Intercontinental Pty Ltd



**RMI**

CONSULTING & TRAINING

## OUR MISSION

*Risk Management Intercontinental Pty Ltd is committed to providing a consistently high level of service and quality. We adopt ethical business practices, use innovative techniques and provide practical solutions. Our aim is to value-add and establish long term relationships by encouraging, motivating and empowering our clients.*

## OUR SERVICES

Our Risk Management Services include:

### BUSINESS RISK MANAGEMENT

- Development and implementation of business risk management systems
- Facilitation of risk management workshops
- Business continuity and disaster recovery planning
- Strategic planning
- Integrated management systems

### PROJECT RISK MANAGEMENT

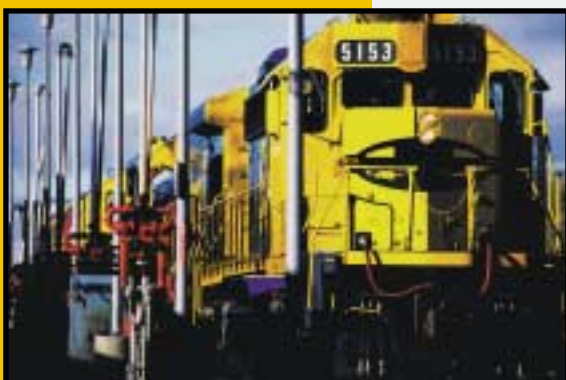
- Project feasibility risk reviews
- Risk-based analysis of project delivery mechanisms
- Facilitation of risk management workshops
- Development of project risk management plans

### MAJOR HAZARDS MANAGEMENT

- Process safety management systems
- Hazop studies - oil and gas, mining, computer
- Quantitative risk assessment studies
- Emergency planning
- Fault tree and event tree analysis
- Failure mode and effect analysis
- Fire safety studies
- Preparation of safety cases

### OCCUPATIONAL HEALTH AND SAFETY MANAGEMENT

- Health and Safety management systems
- Workplace risk assessments
- Principal hazard management plans
- Behavioural change programmes
- Safety perception surveys
- Chemicals management
- Occupational hygiene studies
- Legal opinions/expert witness





## ENVIRONMENTAL MANAGEMENT

- Environmental management systems
- Environmental risk assessments
- Environmental management plans
- Integrated safety and environmental management systems

## AUDITING

- Compliance audits
- Management systems audits
- Auditing of risk management plans

## TRAINING

- Business risk management
- Business continuity planning
- Risk assessment
- Hazop
- Quantitative risk analysis techniques
- Human factors
- Safety leadership
- Behavioural change



## INDUSTRY SECTORS

RMI provides services to Public and Private Sector clients in a range of industries including:

Mining - opencut and underground  
Oil and gas - upstream and downstream  
Infrastructure and asset management  
Projects  
Marine and ports  
Railways  
Water  
Construction/ Construction materials  
Power generation

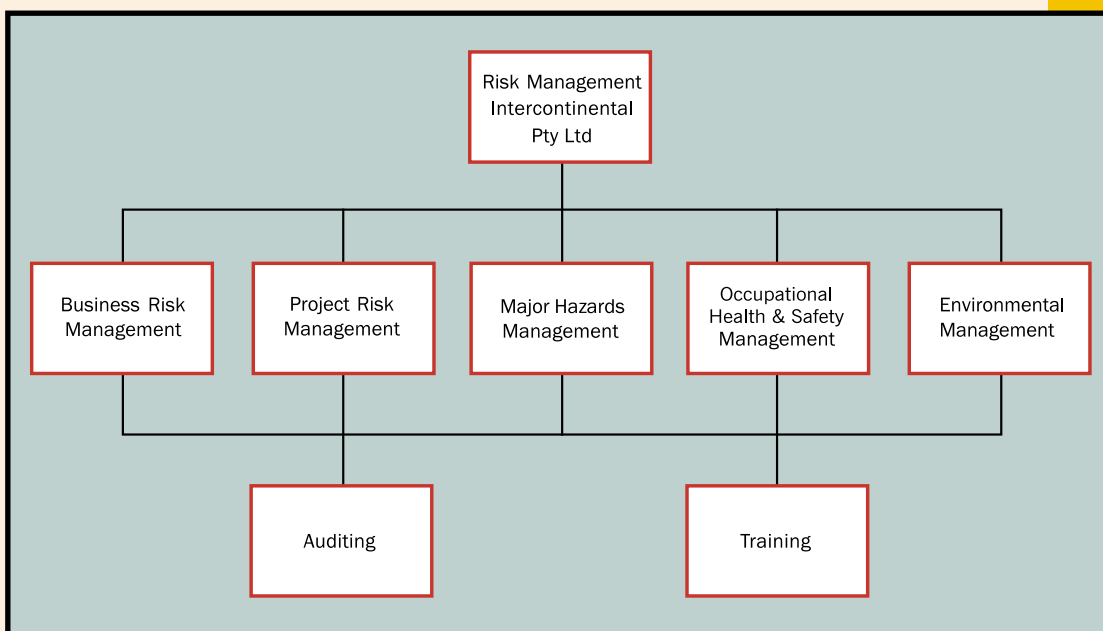


## ABOUT RMI

Established in 1995, Risk Management Intercontinental Pty Ltd (RMI), has become one of Australia's leading specialist risk management consulting organisations, providing services to a wide range of sectors. RMI has completed over 100 projects in the Oil & Gas, Mining, Construction, Transport and Service industries throughout Australia, Pacific Rim, South-East Asia, Europe and America.

RMI operates a quality management system in accordance with the requirements of AS/ISO 9001:2000.

## RMI AT A GLANCE



**RMI**

RISK MANAGEMENT INTERCONTINENTAL Pty Ltd

PO Box 41 NORTHGATE AUSTRALIA 4013

Phone +61 7 3256 7826

Fax +61 7 3256 7998

Email [riskman@rmipl.com.au](mailto:riskman@rmipl.com.au)

ABN 26 895 061 298

June 2002